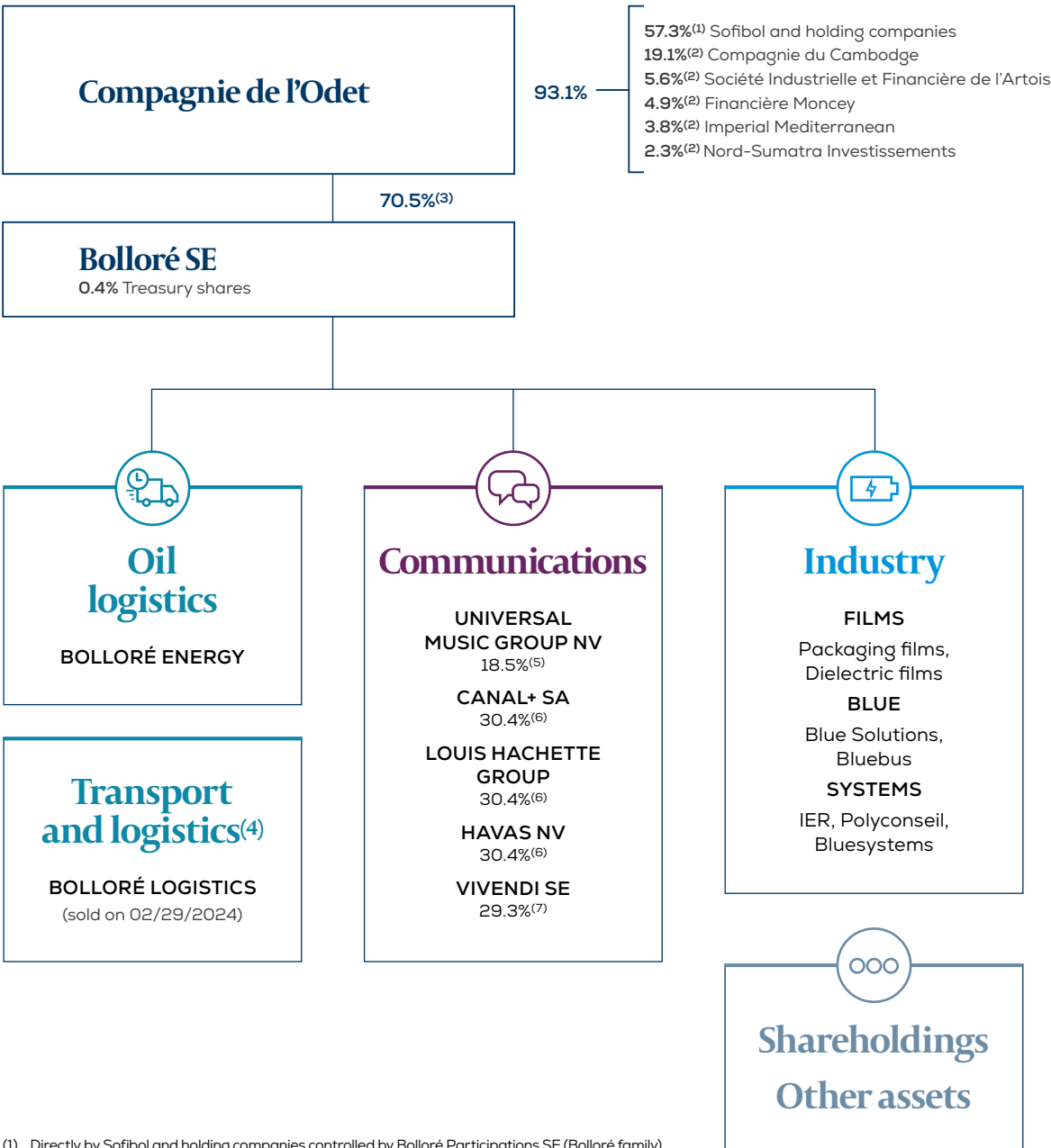


ECONOMIC ORGANIZATIONAL CHART

At December 31, 2024

(as a percentage of capital)



(1) Directly by Sofibol and holding companies controlled by Bolloré Participations SE (Bolloré family).

(2) Companies controlled by Bolloré SE.

(3) Of which 0.5% by subsidiaries of Bolloré SE.

(4) Bolloré Logistics was sold on February 29, 2024, has been classified as held for sale since May 8, 2023 and has been restated in the Group's consolidated financial statements in accordance with IFRS 5.

(5) 18.5% by Bolloré SE (following the final completion of the simplified merger-absorption of Compagnie de Cornouaille into Bolloré SE on July 17, 2024) and 0.3% by Compagnie de l'Odet.

(6) 30.4% by Bolloré SE and 0.6% by Compagnie de l'Odet.

(7) 29.3% by Bolloré SE (following the final completion of the simplified merger-absorption of Compagnie de Cornouaille into Bolloré SE on July 17, 2024) and 0.6% by Compagnie de l'Odet.