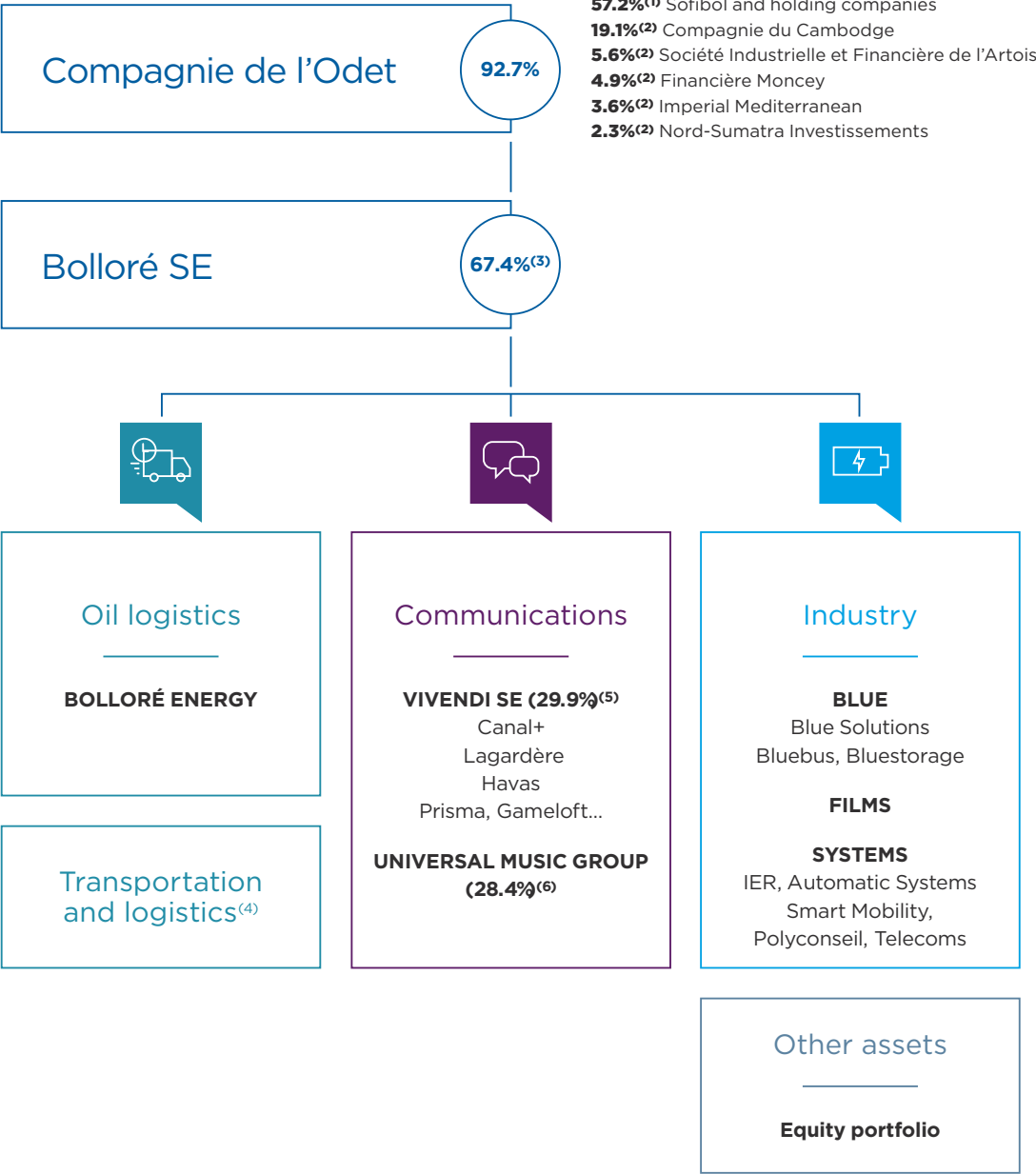


# Economic organizational chart

As at December 31, 2023

(as a percentage of share capital)



(1) Directly by Sofibol and holding companies controlled by Bolloré Participations SE (Bolloré family).

(2) Companies controlled by Bolloré SE.

(3) Including 0.5% held by Bolloré SE subsidiaries, excluding treasury shares (3.4%).

(4) The Bolloré Africa Logistics business was sold on December 21, 2022 and the rest of the Group's Transportation and logistics activities on February 29, 2024.

These activities have been classified as held for sale since May 8, 2023 and have been restated in the Group's consolidated financial statements in accordance with IFRS 5.

(5) 29.3% by Compagnie de Cornouaille, a fully-owned subsidiary of Bolloré SE and 0.6% by Compagnie de l'Odet.

(6) 18.09% by Compagnie de Cornouaille, a fully-owned subsidiary of Bolloré SE, 0.3% by Compagnie de l'Odet, and 10.0% by Vivendi.